

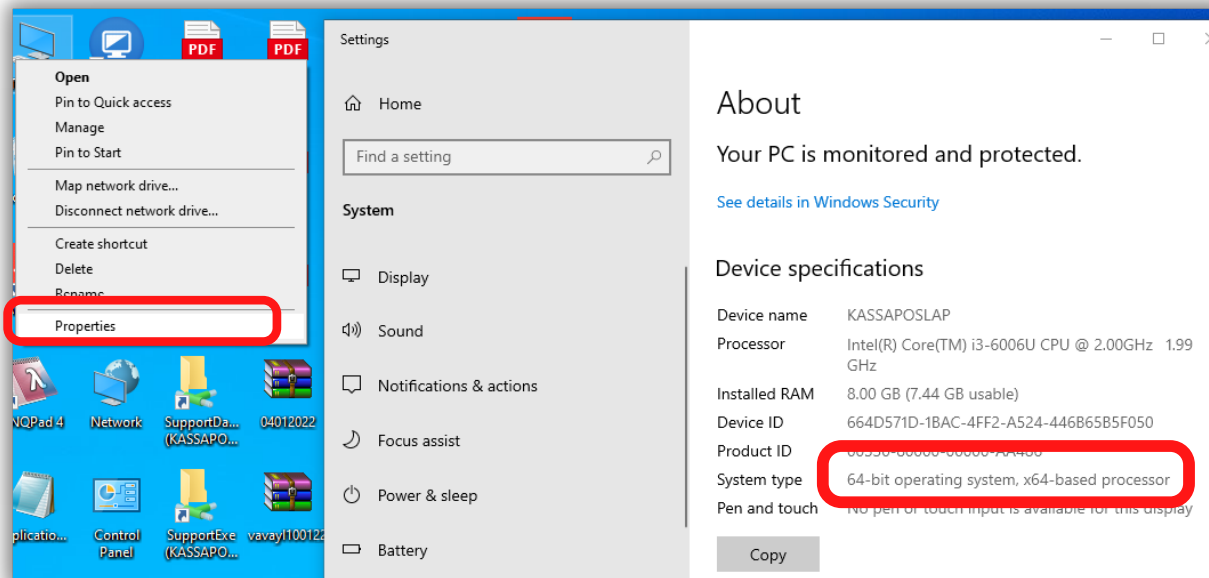
How to Install The SQL Engine

SQL Engine Installation Procedure

Possystem->SQL Engine

Note: Before installing SQL Engine, please check the System type of your computer.
If your system type is 64 bit then you need to install 64 bit SQL Engine.
If your system type is 32 bit then you need to install 32 bit SQL Engine.

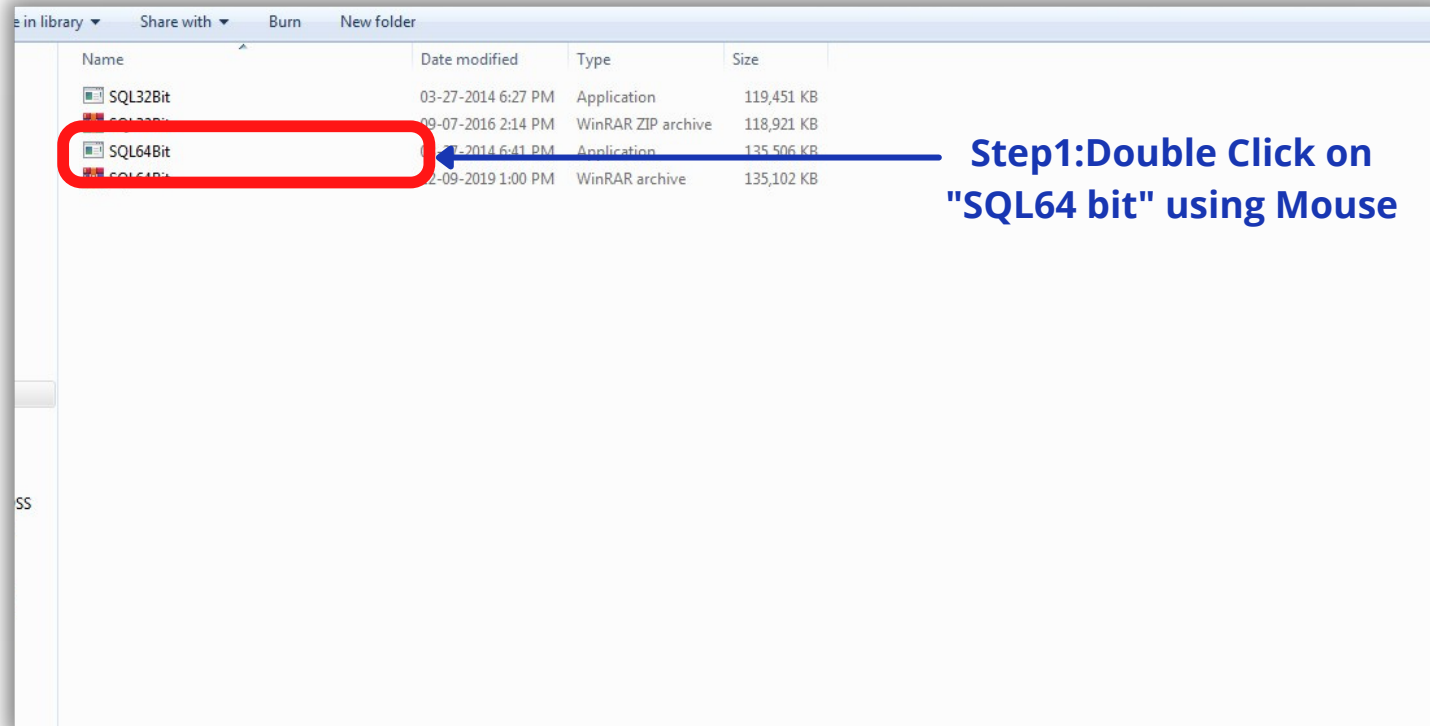
To Verify the System Type, Go to "My Computer" Right Click then Go to "Properties". In Device Specification, it will show the System type.

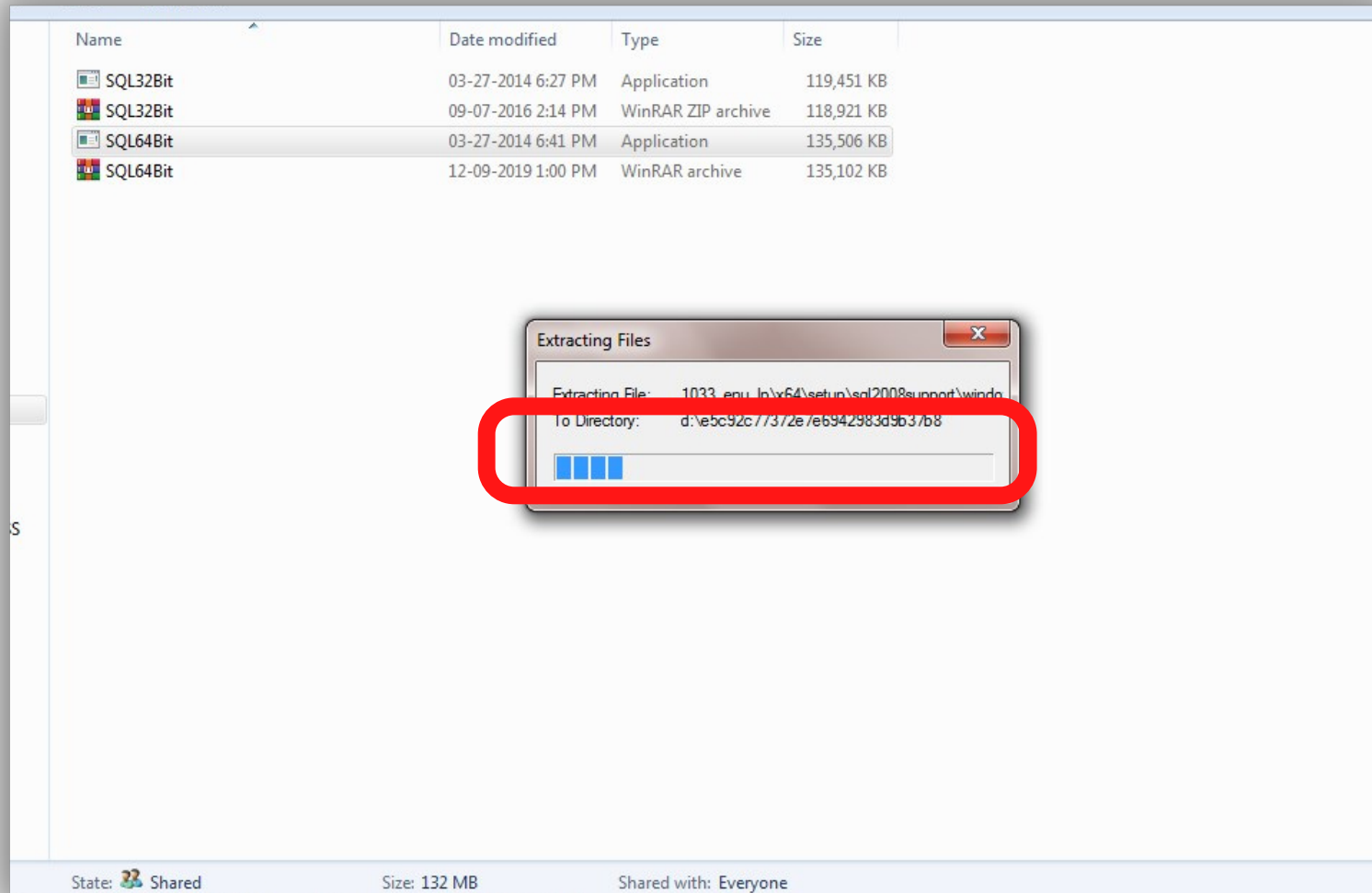


In the above example, the system type is 64 bit, so we are going to install 64 bit SQL Engine.

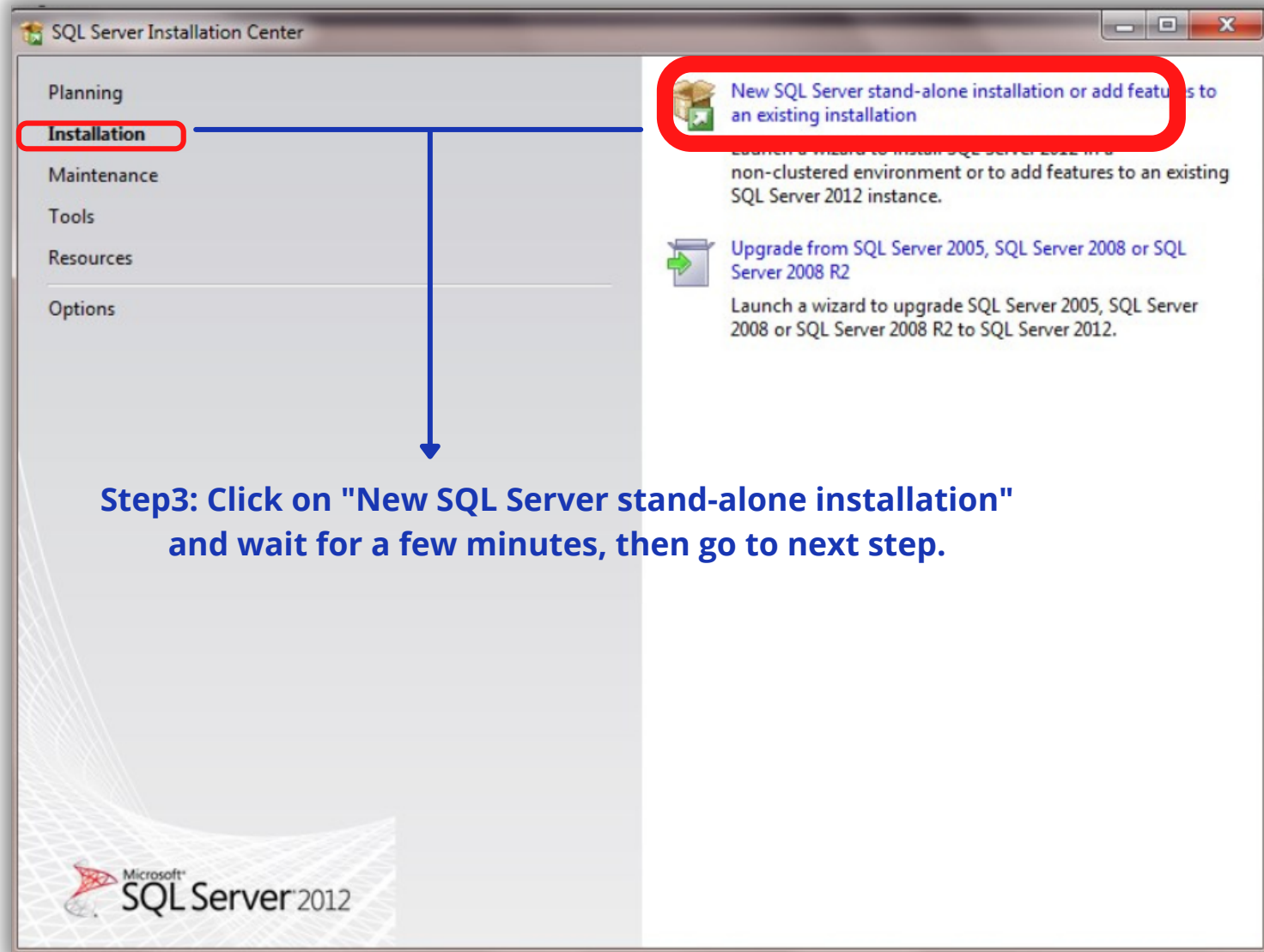
SQL Engine Installation Procedure

Possystem->SQL Engine

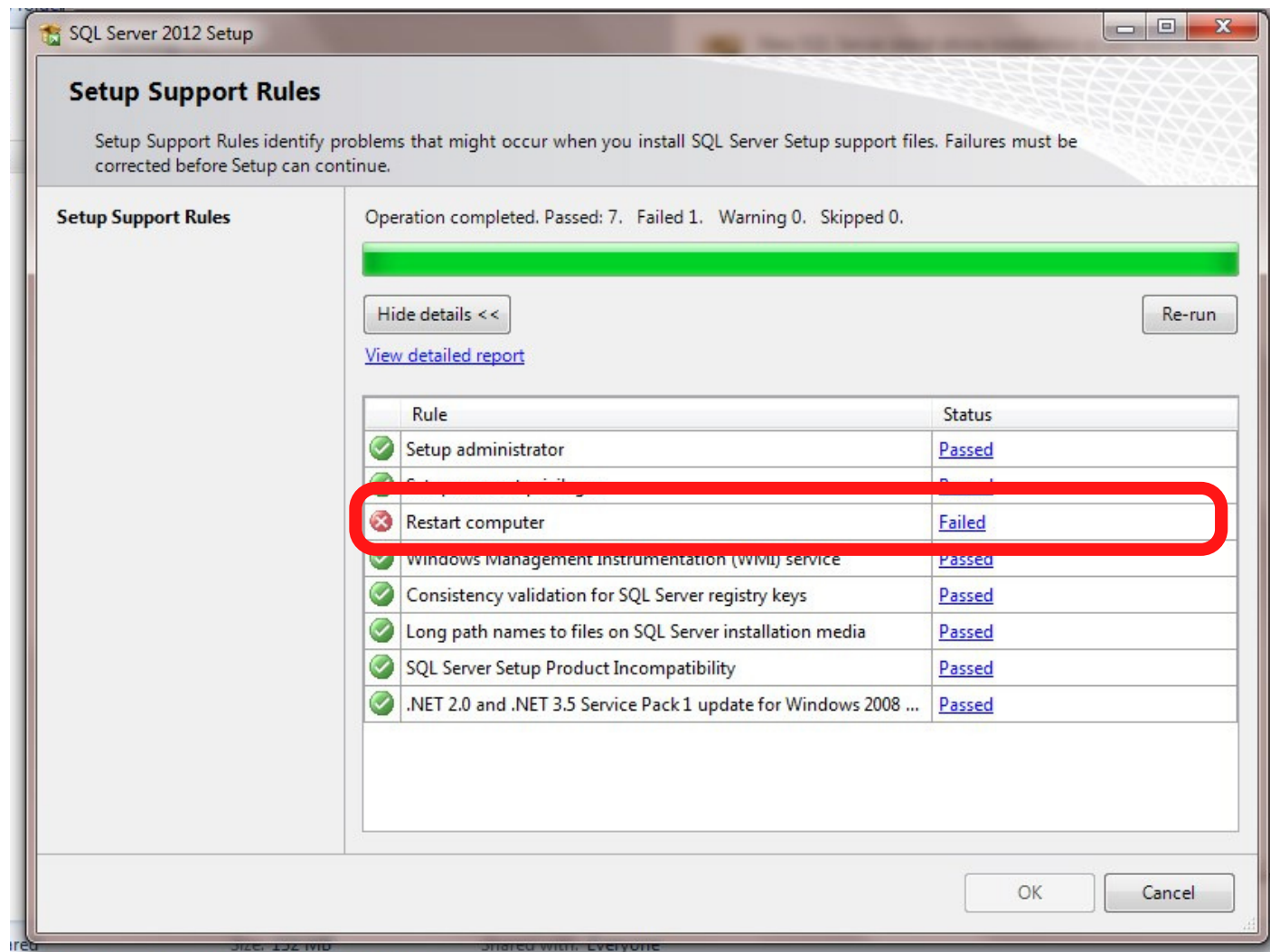




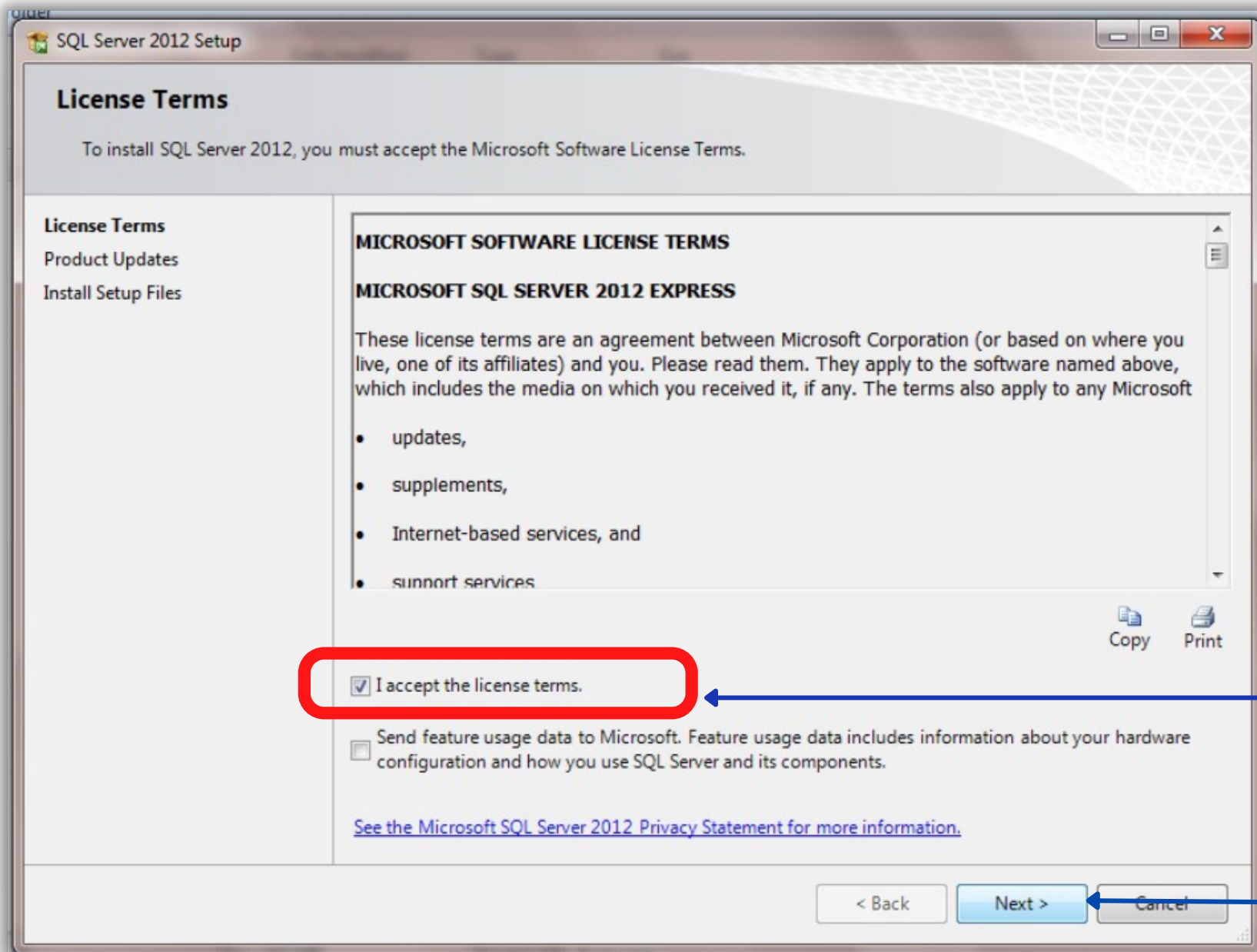
Step2: Wait for few minutes till it is getting fully loaded, then click on Next



Step3: Click on "New SQL Server stand-alone installation" and wait for a few minutes, then go to next step.

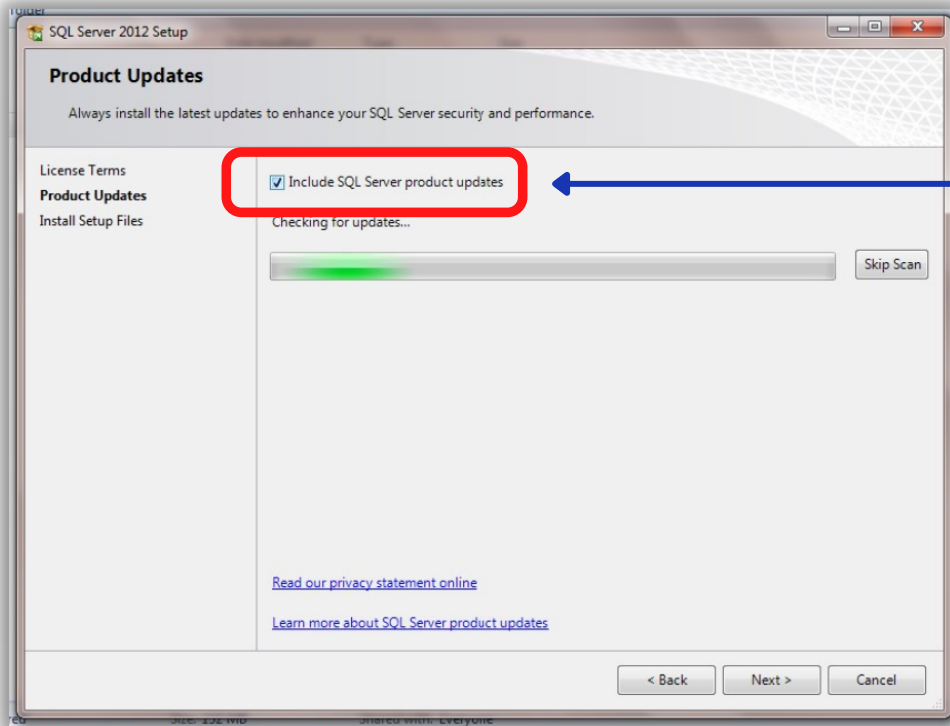


Step4: In case if the system is giving "Restart Computer" error, then close the application and restart the computer once. Again follow Step 1 & Step 2 then go to next step.

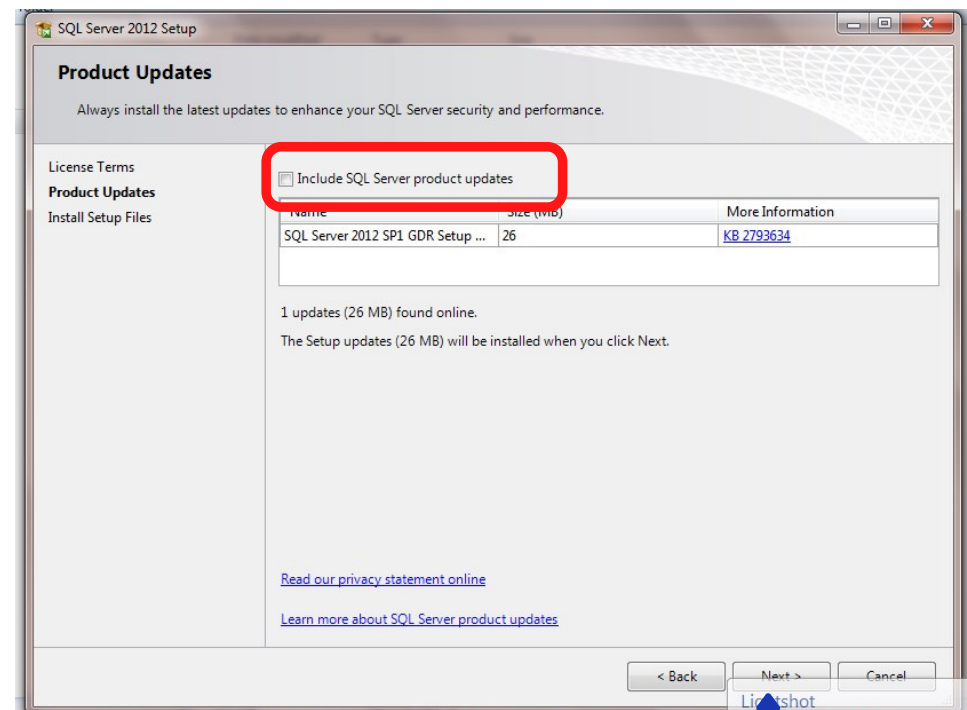


Step5: Click on "I Accept the license terms"

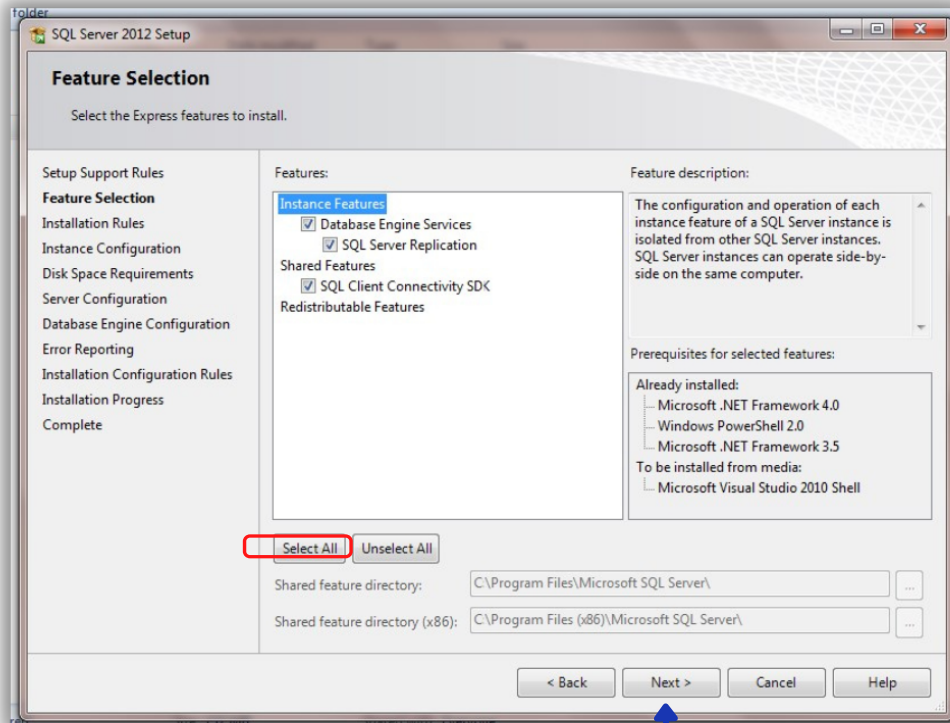
Step6: Click the Next Button



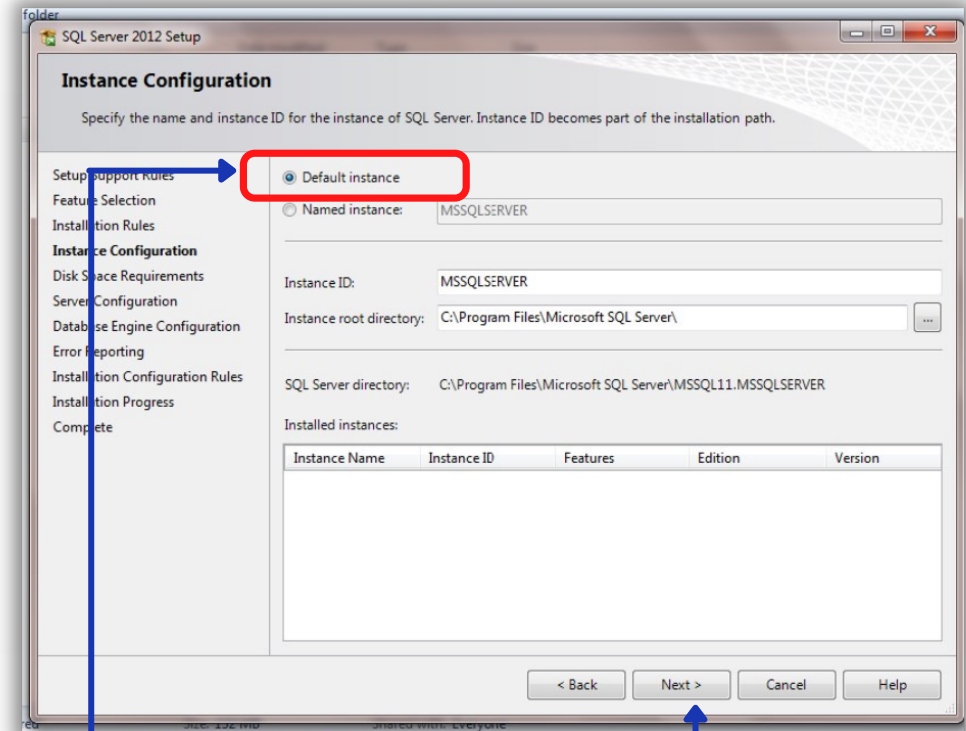
Step7: Remove the Tick on "Include SQL Server product updates"



Step8: Click "Next" Button



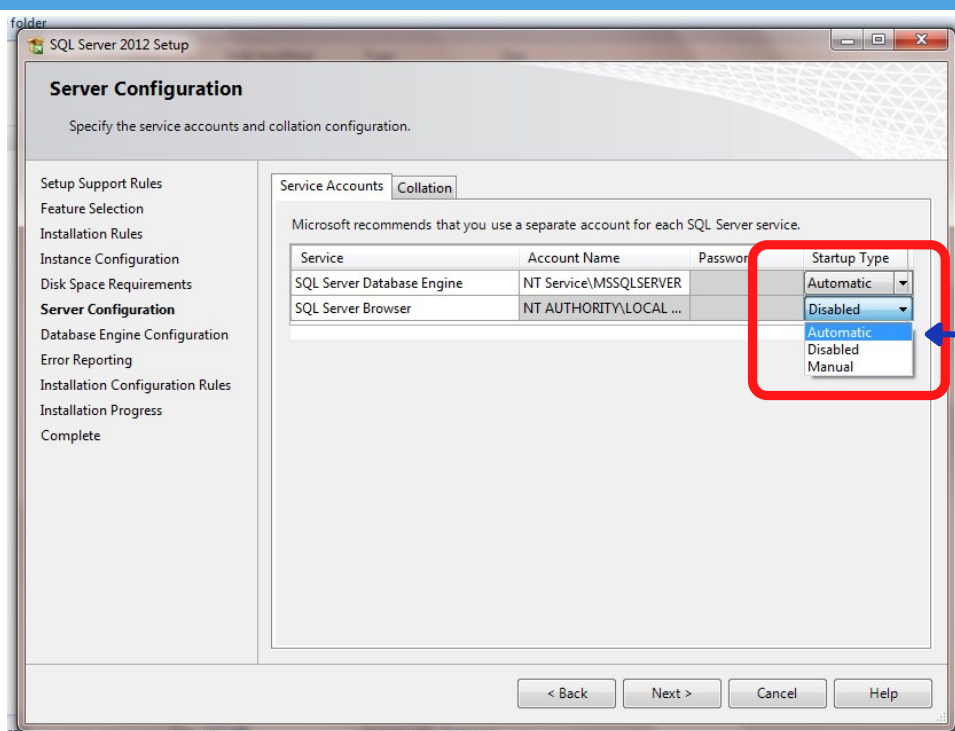
Step9: Click Next Button



Step10: Click on "Default Instance" Radio Button

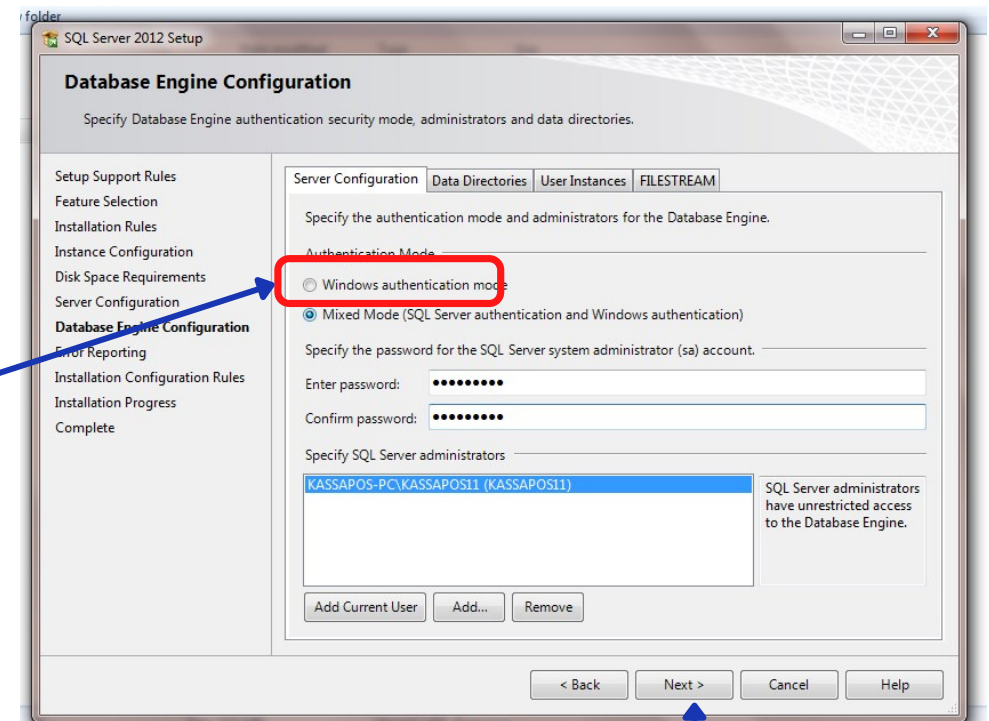
Step11: Click on "Next" Button

Note: Step 9 Using Only For Fresh Installation



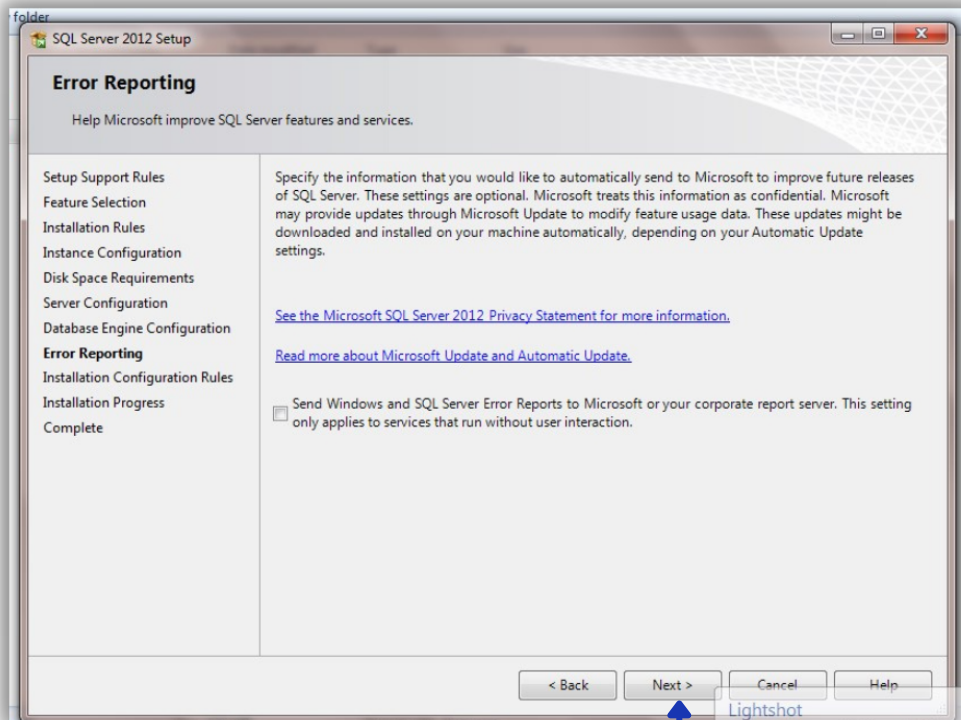
Step12: Select "Automatic" option from list

Step13: Click on "Mixed Mode" Radio Button and then enter SQL Password.



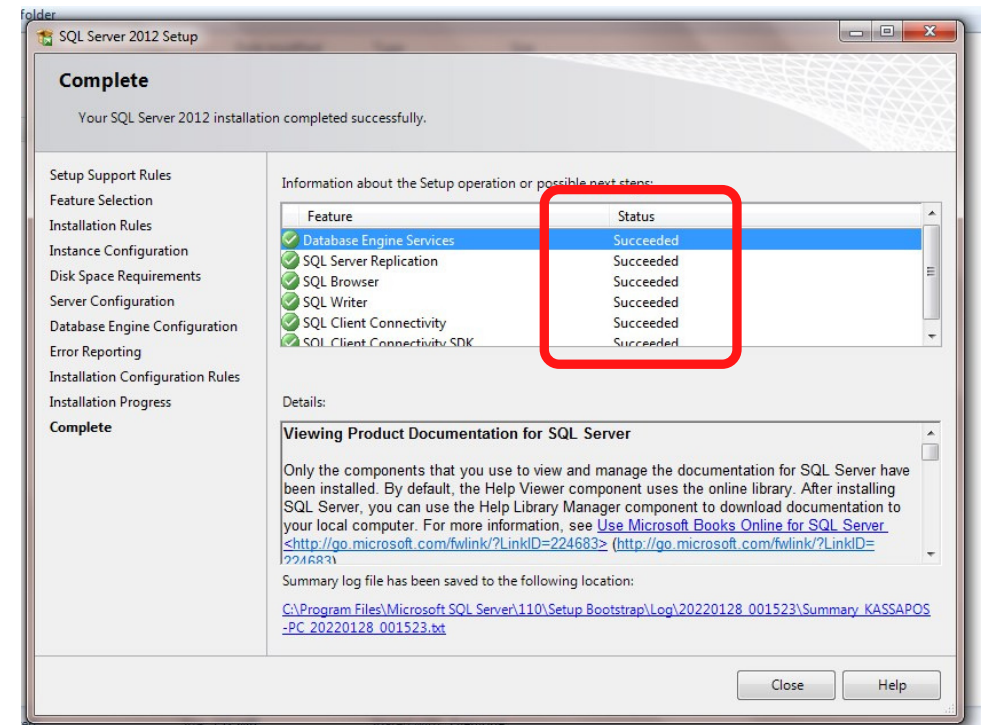
Step14: Click on "Next" Button

Note: Default SQL Password- kassa@123



Step15: Click on "Next" Button

Step16: Once SQL Installation is started, wait for 5 to 10 minutes to get it completed.



Installation Status shows "Succeeded", now SQL Engine Installation is successfully completed.